

MER Rubber Support Inserts

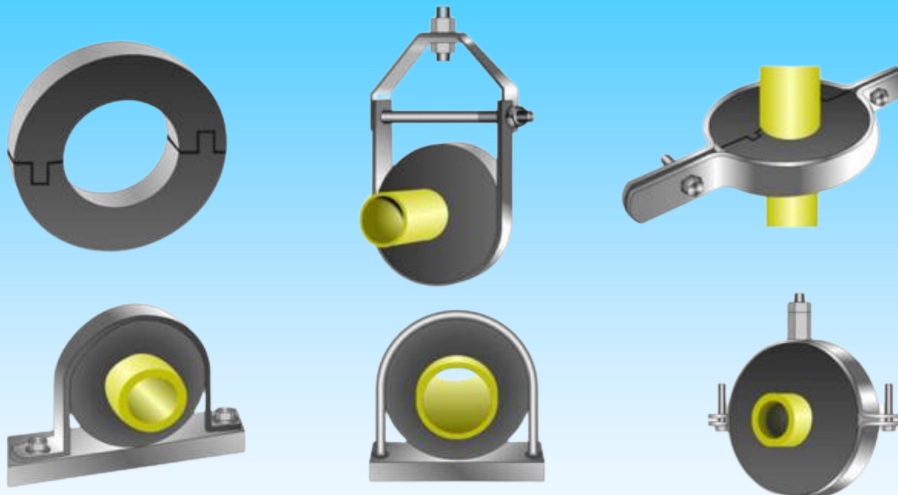
MER Rubber support Inserts are designed for use at the support points of insulated pipes for preventing the crushing of insulation. MER Rubber support inserts are made out of high density rubber compound and offer various advantages over conventional materials such as wood or foamed

Advantages

- High load bearing capacity, hence no possibility for crushing or crumbling under pipe loads.
- Resistance to deterioration and distortion with time and exposure to moisture
- Dimensional accuracy is ensured since each size is individually machine molded
- Rubber inherently offers the property of vibration isolation which is not available with any other material used

Applications

- Rubber support inserts are used for the installation of domestic hot/cold water chilled water pipe lines
- Pipe support insert is suitable for ceiling or vertical wall mounting



Manufacturers of Rubber & Metal Products

PO Box: 38031, Jabel Ali Industrial Area 2
Dubai, UAE.

Ph: +971 434-00-519, E: merm@emirates.net.ae, W: www.mermgroup.com



Pipe Support Systems & Solutions



Middle East Rubber Manufacturing
INCREDIBLY TOUGH... FLEXIBLE ENOUGH!

Compound Data Sheet RSI

SL NO	PROPERTIES	TEST METH-OD	CONDITON	UNIT	SPECIFICA-TION
1	Base Polymer				NR/SBR
2	Specific Gravity	ASTM D 1817	Before Ageing	g/Cm ³	1.50 ± 0.05
3	Hardness	ISO 76191 / ASTM D 2240	Before Ageing	Shore A	80-90
4	Tensile Strength	ISO - 37 / ASTM D 412	Before Ageing	Kg/cm ²	65 (Min)
5	Elongation at Break	ISO - 37 / ASTM D 412B	Before Ageing	%	175 (Min)
	<u>Ageing Test</u>				
a	Change in Hardness	150 -188 ASTM D 573	At 70° C for 72 Hrs	Shore A	Max +10
b	Change in Tensile		At 70° C for 72 Hrs	%	Max -25
c	Change in Elongation		At 70° C for 72 Hrs	%	Max -25
d	Compression Set	ISO-815 ASTM D 395	At 70° C for Method B 24 Hrs	%	Max 30

Reactivity

Operating Temperature: -35 to 120°C

Stability: The Product is Stable

Possibility of Hazardous Reaction: Under normal conditions of storage and use, Hazardous reaction will not occur.

Decomposition Temperature: > 200°C

Manufacturers of Rubber & Metal Products

PO Box: 38031, Jabel Ali Industrial Area 2

Dubai, UAE.

Ph: +971 434-00-519, E: merm@emirates.net.ae, W: www.mermgroup.com

Rubber Support Size Chart

MER Rubber Support Insert are available in all the standard sizes for MS and Copper pipes in all standard insulation thickness. Non standard or custom made RSI can be manufactured on demand of customer up to 48 inches

Pipe Size	Insulation Thickness							
	13	19	25	32	40	50	65	75
1/2"	MER9001	MER9002	MER9003	MER9004	MER9005	MER9006	MER9007	MER9008
3/4"	MER9009	MER9010	MER9011	MER9012	MER9013	MER9014	MER9015	MER9016
1"	MER9017	MER9018	MER9019	MER9020	MER9021	MER9022	MER9023	MER9024
1 1/4"	MER9025	MER9026	MER9027	MER9028	MER9029	MER9030	MER9031	MER9032
1 1/2"	MER9033	MER9034	MER9035	MER9036	MER9037	MER9038	MER9039	MER9040
2"	MER9041	MER9042	MER9043	MER9044	MER9045	MER9046	MER9047	MER9048
2 1/2"	MER9049	MER9050	MER9051	MER9052	MER9053	MER9054	MER9055	MER9056
3"	MER9057	MER9058	MER9059	MER9060	MER9061	MER9062	MER9063	MER9064
4"	MER9065	MER9066	MER9067	MER9068	MER9069	MER9070	MER9071	MER9072
5"	MER9073	MER9074	MER9075	MER9076	MER9077	MER9078	MER9079	MER9080
6"	MER9081	MER9082	MER9083	MER9084	MER9085	MER9086	MER9087	MER9088
8"	MER9089	MER9090	MER9091	MER9092	MER9093	MER9094	MER9095	MER9096
10"	MER9097	MER9098	MER9099	MER9100	MER9101	MER9102	MER9103	MER9104
12"	MER9105	MER9106	MER9107	MER9108	MER9109	MER9110	MER9111	MER9112
14"	MER9113	MER9114	MER9115	MER9116	MER9117	MER9118	MER9119	MER9120
16"	MER9121	MER9122	MER9123	MER9124	MER9125	MER9126	MER9127	MER9128
18"	MER9129	MER9130	MER9131	MER9132	MER9133	MER9134	MER9135	MER9136
20"	MER9137	MER9138	MER9139	MER9140	MER9141	MER9142	MER9143	MER9144
24"	MER9145	MER9146	MER9147	MER9148	MER9149	MER9150	MER9151	MER9152
26"	MER9153	MER9154	MER9155	MER9156	MER9157	MER9158	MER9159	MER9160

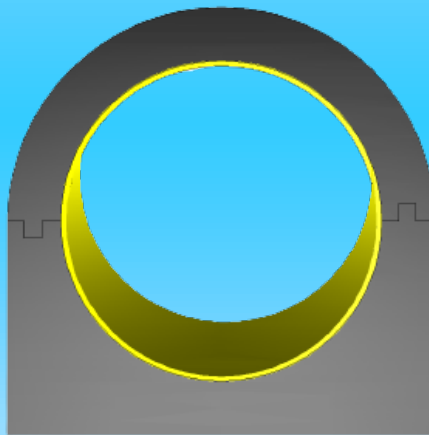
Manufacturers of Rubber & Metal Products

PO Box: 38031, Jabel Ali Industrial Area 2
 Dubai, UAE.

Ph: +971 434-00-519, E: merm@emirates.net.ae, W: www.mermgroup.com

Bottom Flat RSI

MER is providing bottom flat RSI for bigger diameter pipes for avoiding the chance of deflection. Flat bottom RSI are recommended for bigger diameter pipes with higher loads. MER has developed bottom flat RSI such a way that the area of contact will be more so that it can carry higher loads without deflection and reduction of any gap if developed.



Manufacturers of Rubber & Metal Products

PO Box: 38031, Jabel Ali Industrial Area 2
Dubai, UAE.

Ph: +971 434-00-519, E: merm@emirates.net.ae, W: www.mermgroup.com